



SIGNATURE

CROSSLINE

CROSSLINE



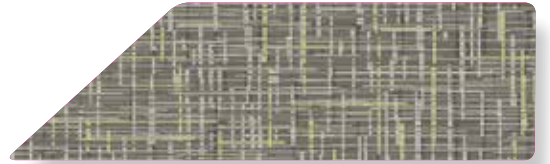
BRIDGING



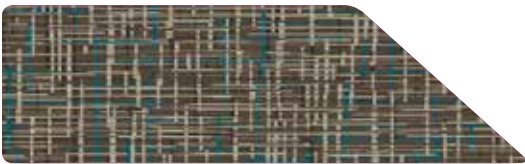
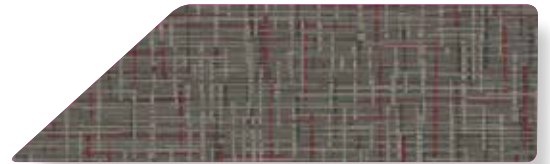
CHART



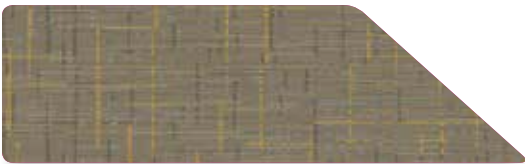
FOCAL POINT



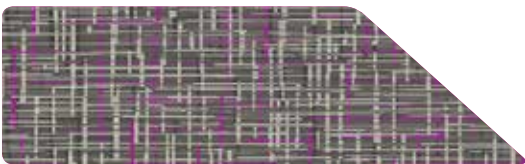
OPTICAL TIES



OVERLAY



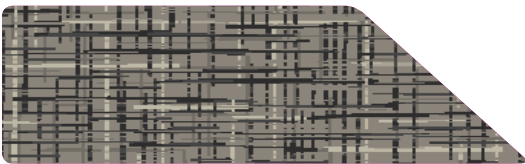
SEAMING



SIGHTING



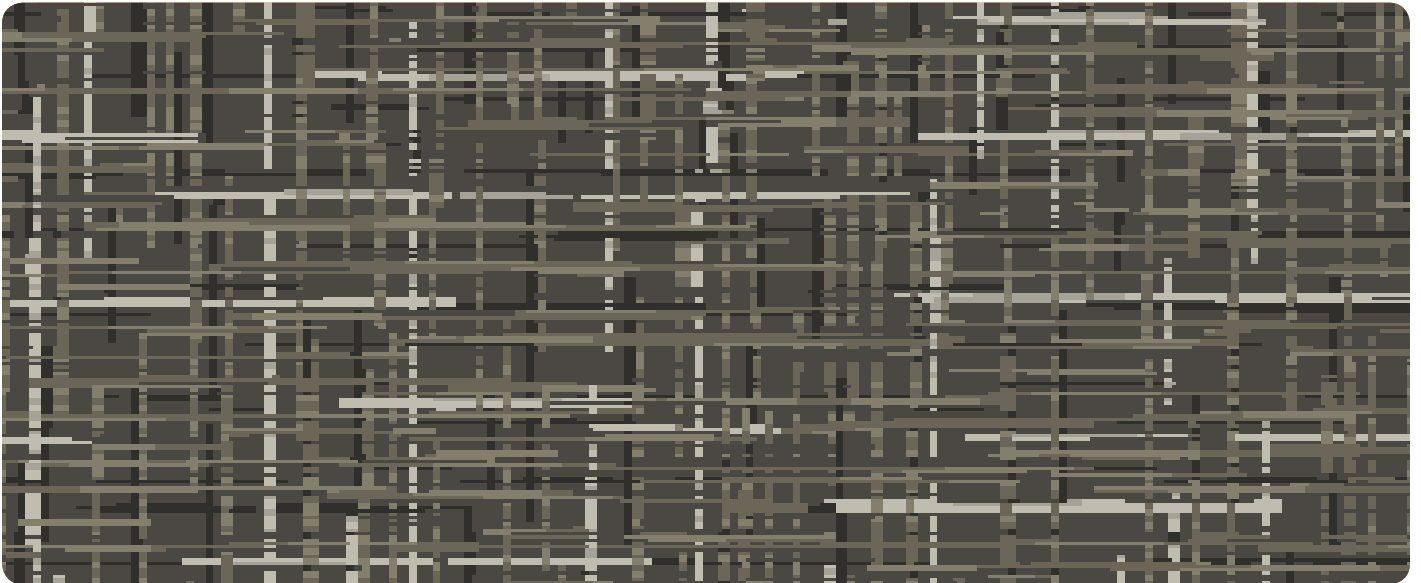
SILK SCREEN



WIRED

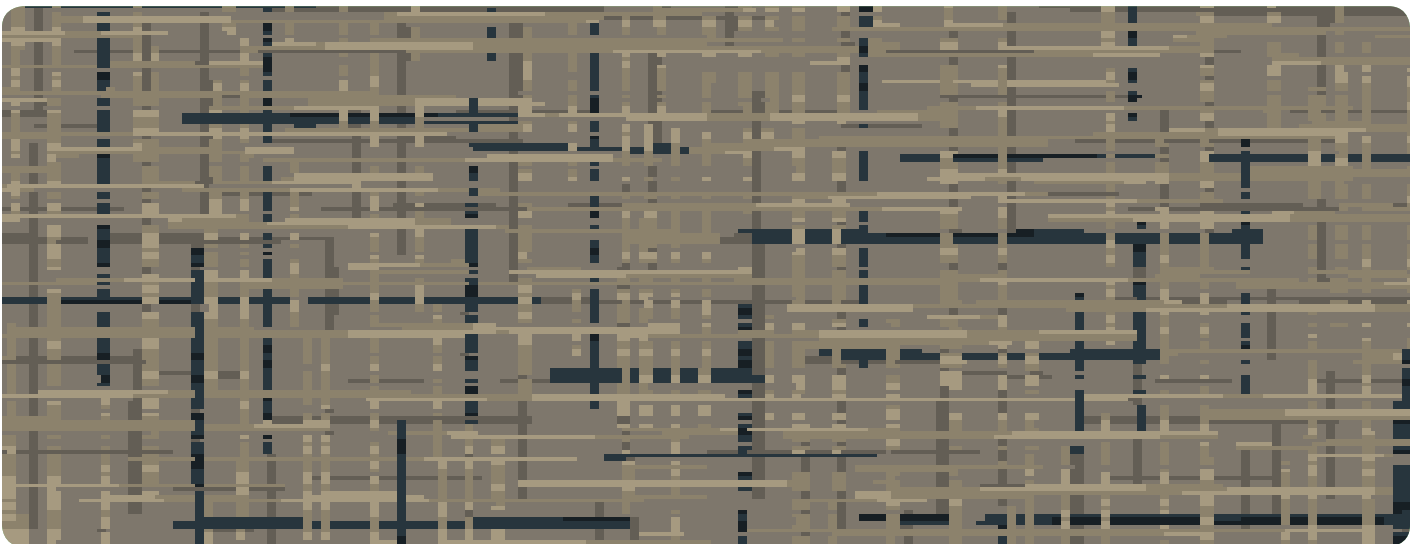
FLOORS FOR
SIGNATURE
SPACES





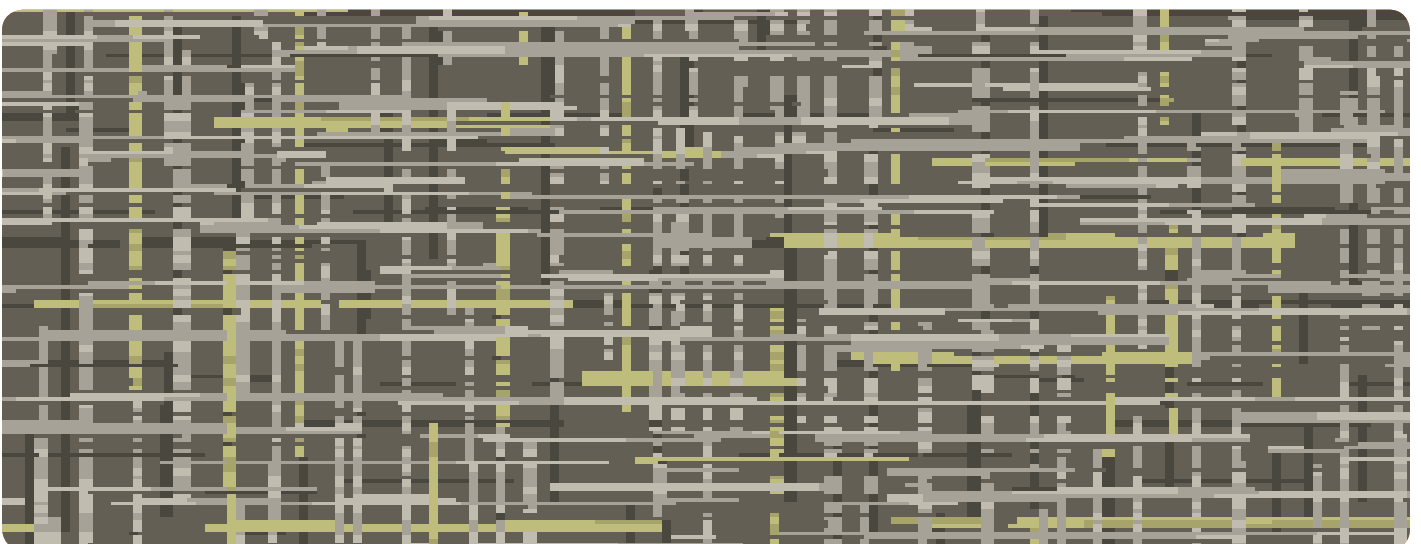
A) 3120 B) 3201 C) 3105

BRIDGING



A) 3126 B) 3236 C) 3123

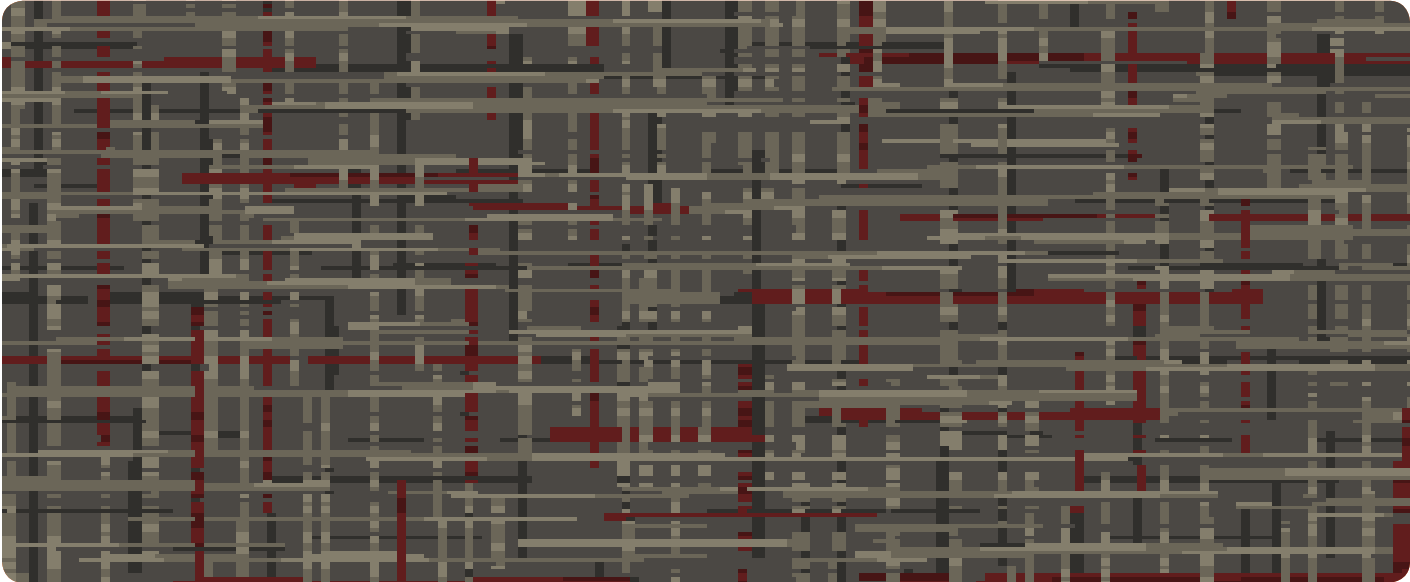
CHART SITE



A) 3143 B) 3105 C) 3404

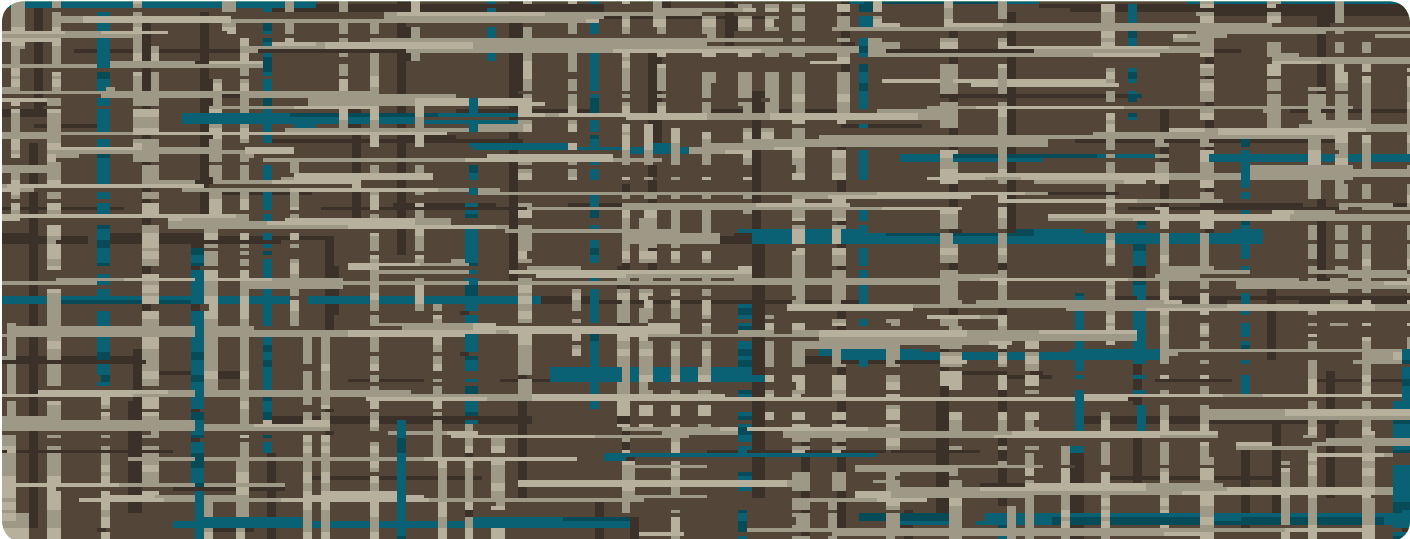
FOCAL PLANE





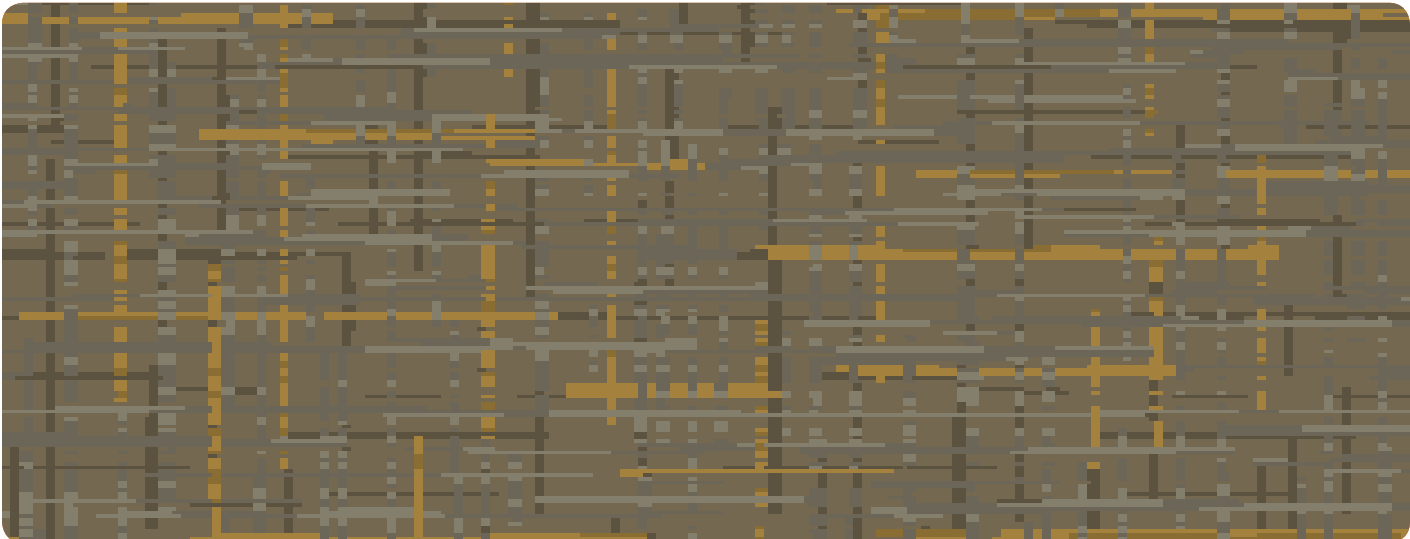
A) 3120 B) 3201 C) 3363

OPTICAL TIES



A) 3238 B) 188.140 C) 3453

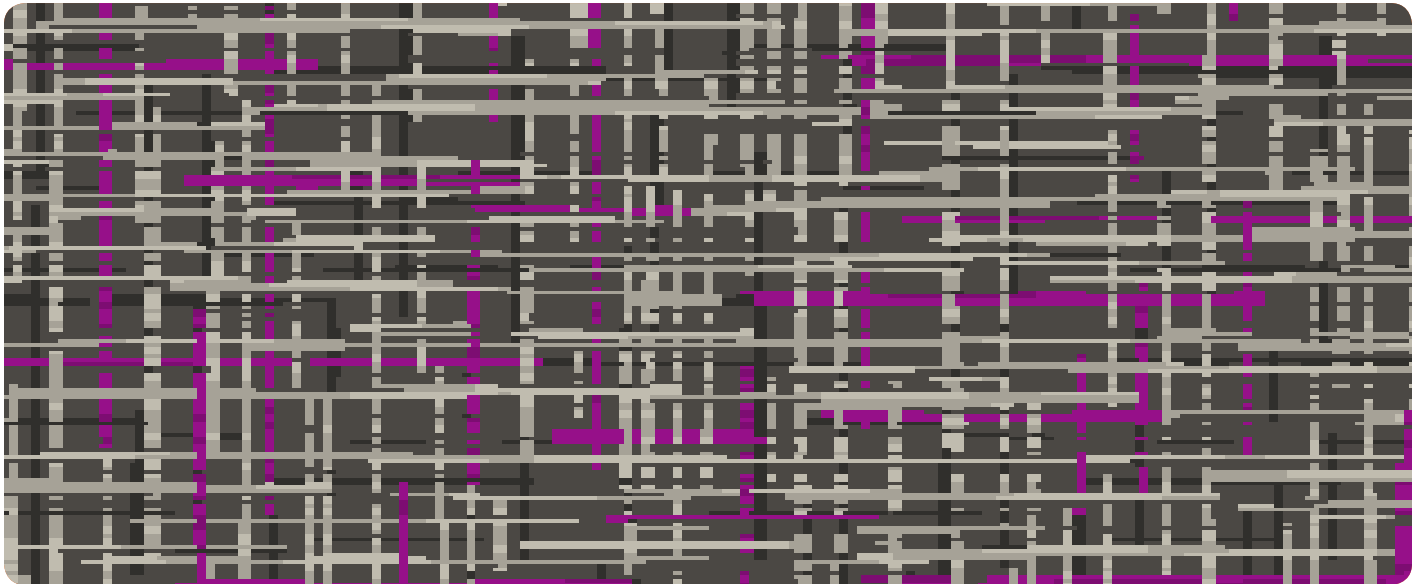
OVERLAY



A) 3204 B) 3201 C) 3219

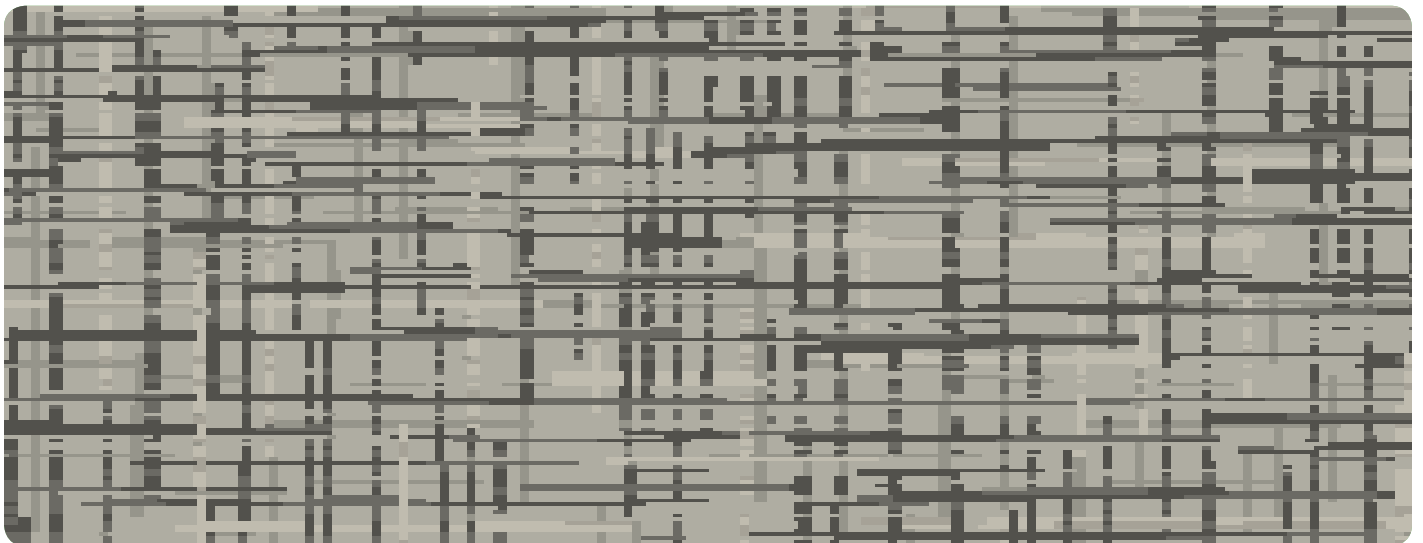
SEAMING





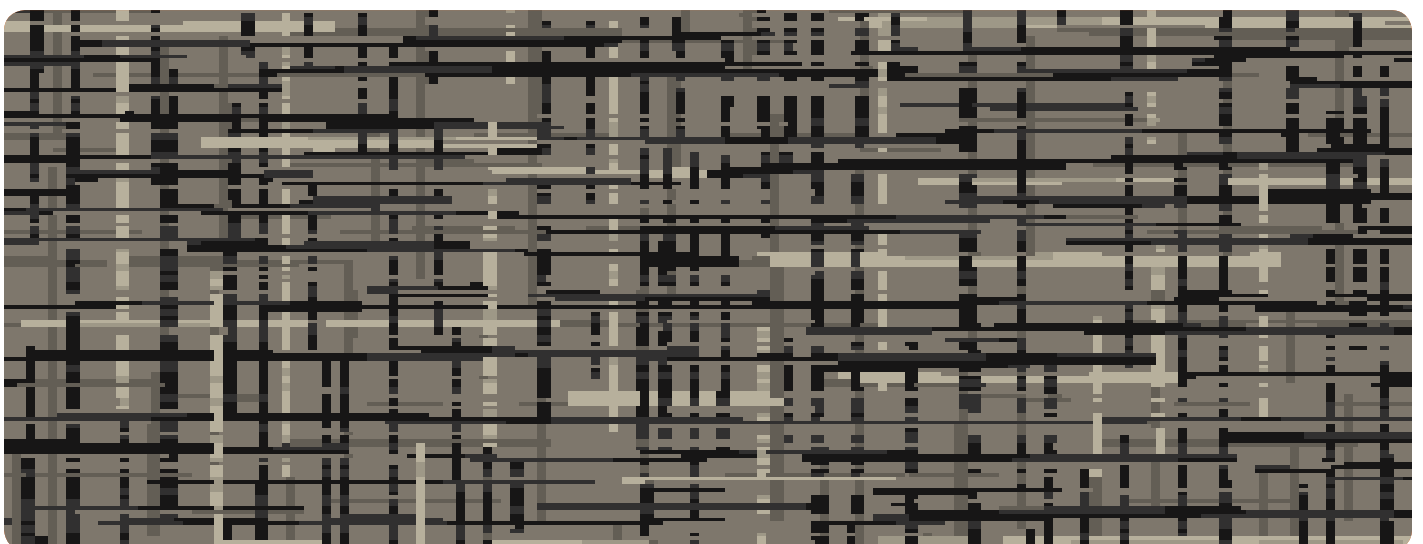
A) 3120 B) 3105 C) 3355

SIGHTING



A) 193.140 B) 3197 C) 3105

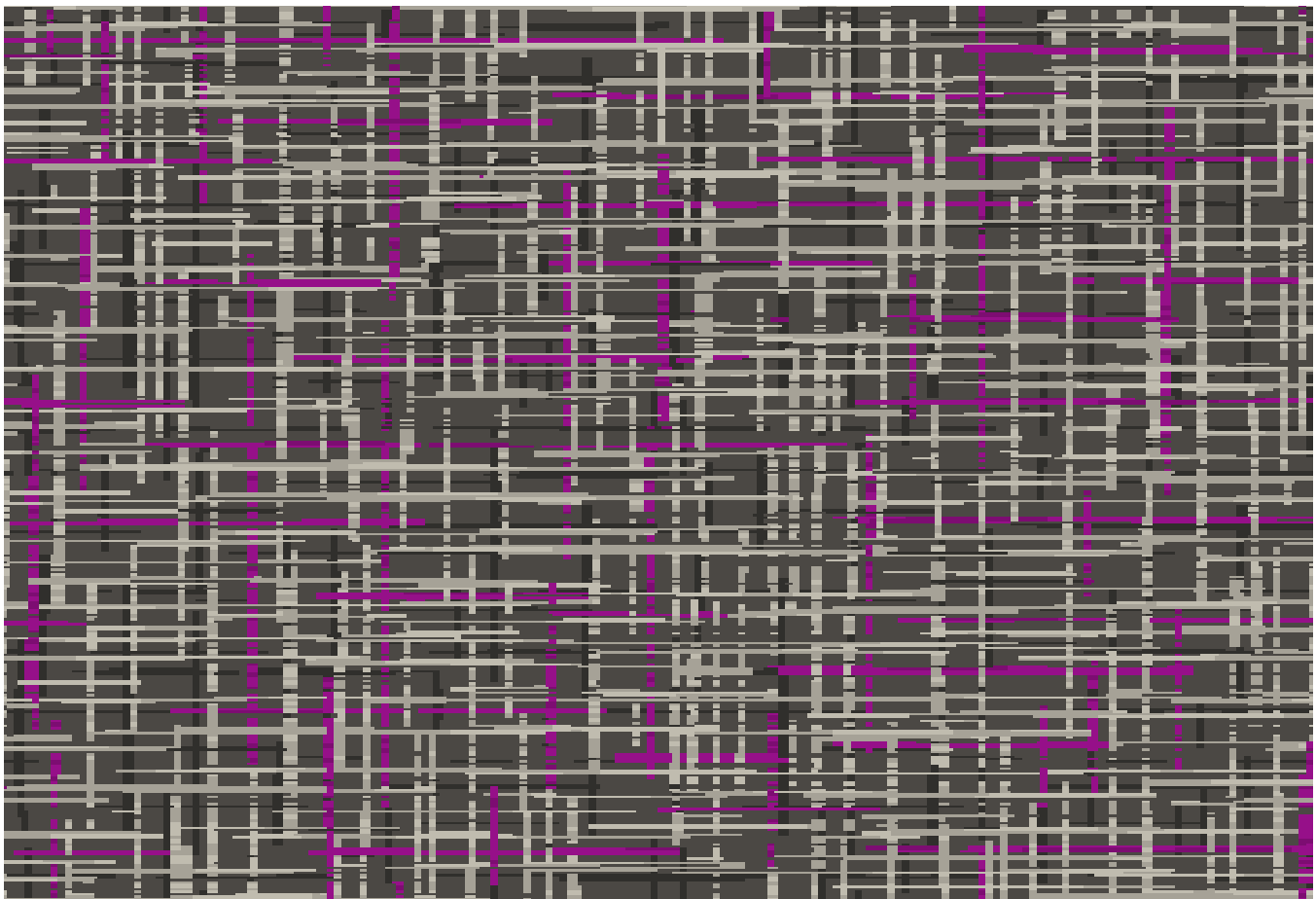
SILK SCREEN



A) 3126 B) 3103 C) 188.140

WIRED





A) 3120 B) 3105 C) 3355

SIGHTING

CROSSLINE

CONSTRUCTION

PILE FIBER

STITCH RATE

PILE HEIGHT

TUFTED PILE WEIGHT

DYE METHOD

PRIMARY BACKING

SECONDARY BACKING

WIDTH

DENSITY FACTOR

WEIGHT DENSITY FACTOR

WARRANTY

SOIL & STAIN TREATMENT

PATTERN REPEAT

1/10TH COLORPOINT INFINITY

100% SOLUTION DYED NYLON

12 SPI

.218

40 oz

SOLUTION

WOVEN POLYPROPYLENE

Contract Print Base

12'

6,605

264,200

TEN YEAR LIMITED WEAR

SCOTCHGARD AVAILABLE

36" x 31.5"

TESTING DATA

ASTM E-648 Flooring Radiant Panel:

DOC-FFI-70 Methenamine Pill Test:

Electrostatic Propensity:

E-662 Smoke Chamber:

Class I

Passes AATCC 134

Less than 3.5 KV

Less than 450

12" x 17" samples available upon request.

Please contact the mill at 800.809.7086 or your local Signature Sales Representative.





FEATURED COLORWAY: SIGHTING



SPECIFICATIONS ARE BASED ON AVERAGES FROM MANUFACTURING PROCESSES AND MAY VARY WITHIN NORMAL INDUSTRY TOLERANCES. MATERIAL SUPPLY AND /OR MANUFACTURING PROCESSES MAY NECESSITATE SPECIFICATION CHANGES WITHOUT NOTICE. SUCH VARIATIONS DO NOT AFFECT PRODUCT PERFORMANCE.

THIS CARPET IS MANUFACTURED AND RECOMMENDED FOR FLOOR COVERING USE ONLY. AS IN ALL QUALITY CARPET, COLORS ARE SUBJECT TO DYE LOT VARIATIONS. FOR OPTIMUM SIDE MATCH AND FINISHED SEAM APPEARANCE, THIS PRODUCT SHOULD BE INSTALLED WHENEVER POSSIBLE, WITH SEAMS RUNNING PERPENDICULAR TO MAJOR EXTERNAL (OUTSIDE) LIGHT SOURCES.

THE EQUIPMENT USED TO MANUFACTURE PATTERNED CARPET MAY CREATE VISIBLE LINES IN BOTH LENGTH AND WIDTH DIRECTIONS. THIS CHARACTERISTIC WILL NOT ALWAYS BE DETECTABLE IN SMALL SAMPLES AND IS NOT CONSIDERED A MANUFACTURING DEFECT.

AS WITH ALL PATTERNED CARPETS, PERFECT PATTERN MATCH MAY NOT BE OBTAINABLE AT SEAMS. TOLERANCES IN PATTERN REGISTRATION—BOW AND SKEW—ARE TO BE EXPECTED. ALL SEAMS AND CUT EDGES AT DOORS AND CLOSETS MUST BE SEAM SEALED.

CHAIR PADS ARE RECOMMENDED UNDER CHAIRS WITH ROLLERS TO PRESERVE APPEARANCE RETENTION, AVOID PREMATURE OR ACCELERATED WEAR, AND ACT AS A DETERRENT TOWARD DELAMINATION. SPECIAL BACKING SYSTEMS ARE AVAILABLE THAT DO NOT REQUIRE CHAIR PADS. WALK OFF MATS ARE RECOMMENDED AT BUILDING ENTRY WAYS TO REDUCE SOILING.

PLEASE CALL SIGNATURE'S TECHNICAL SERVICES DEPARTMENT AT 800-809-7086 FOR ANY QUESTIONS OR ASSISTANCE.



2222 South Hamilton Street • Dalton, GA 30721
P.O. Box 1328, Dalton, GA 30722-1328
1.800.809.7086 • T 706.270.5799 • F 706.270.8779
www.signaturehospitalitycarpets.com