



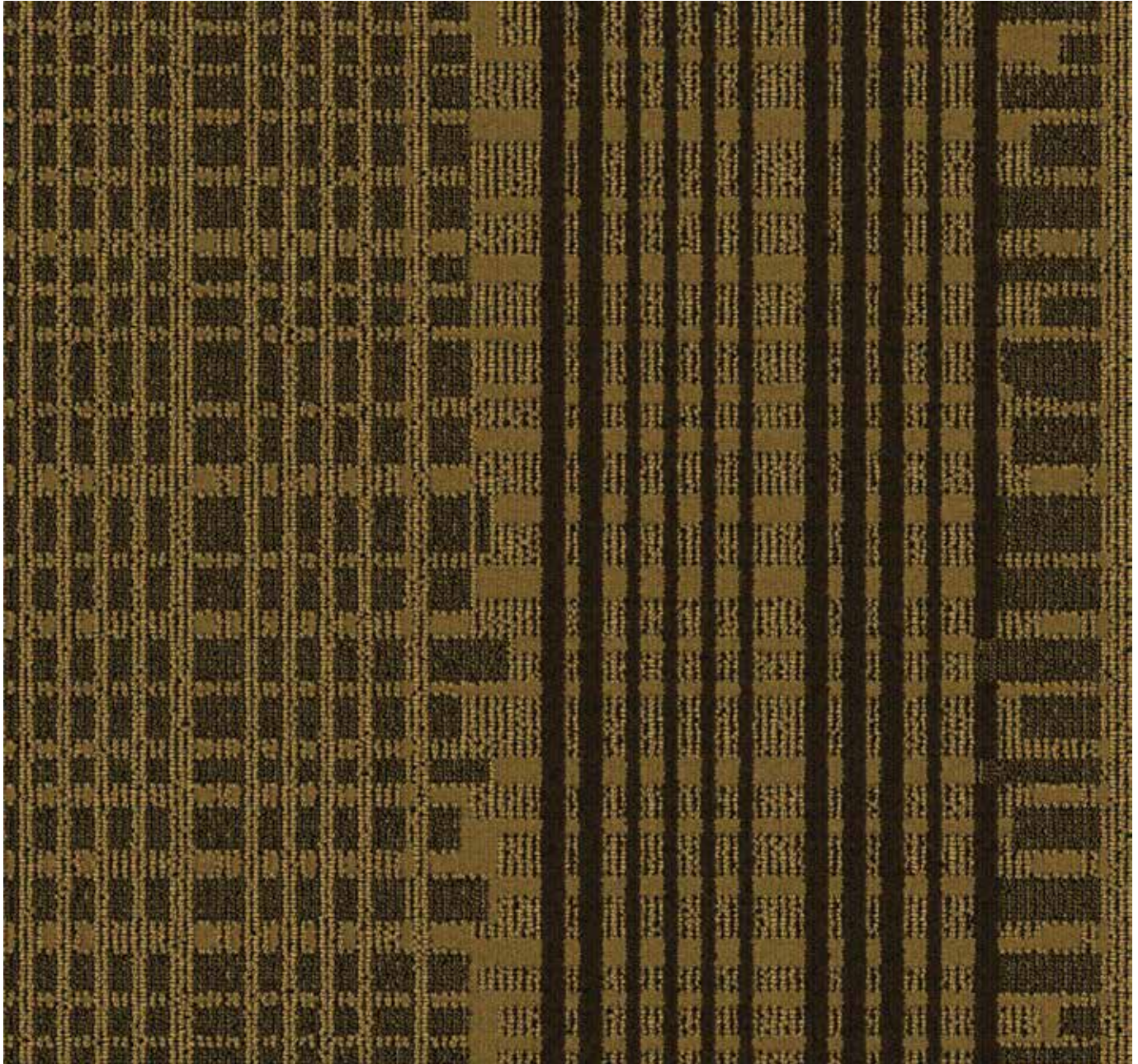
SIGNATURE



PATTERN: GUEST ROOMS - I29267

REPEAT: 24" W X 24" L

CONSTRUCTION: HIGH PERFORMANCE CUT/LOOP



A

B

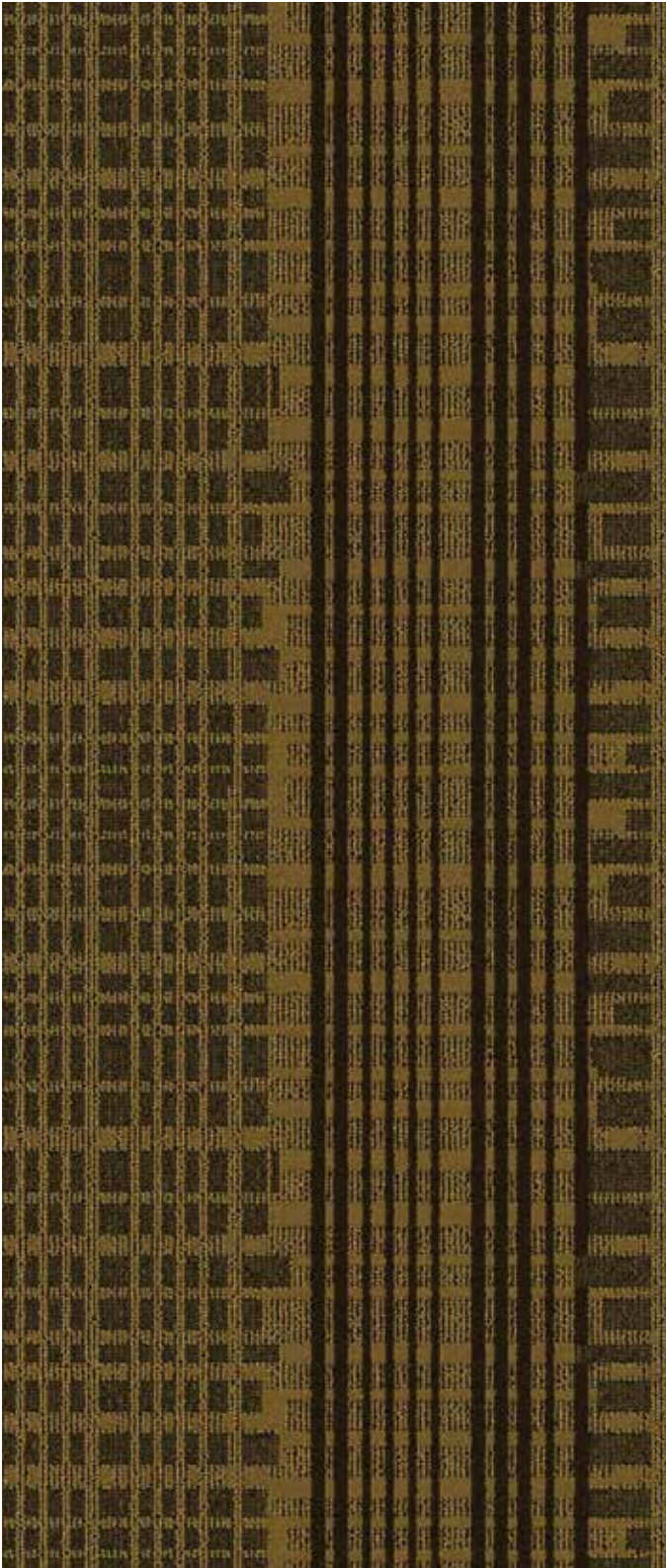


3299

3734

COLORS ARE APPROXIMATION ONLY. PLEASE REFER TO THE SIGNATURE POM SET FOR ACTUAL COLORS.

SIGNATURE



GUEST ROOMS

129267

32 OZ | HIGH PERFORMANCE CUT/LOOP

DYE METHOD:	SOLUTION
PILE FIBER:	100% SOLUTION DYED NYLON
TUFTED PILE WEIGHT:	32 OZ. PER SQ. YD.
STITCH RATE:	15 STITCHES PER INCH
PILE HEIGHT:	.176 AVERAGE
DENSITY FACTOR:	5,818
WEIGHT DENSITY FACTOR:	186,176
TOPICAL STAIN TREATMENT:	SCOTCHGARD®
WIDTH:	12'
PATTERN REPEAT:	24" W X 24" L
PRIMARY BACKING:	WOVEN POLYPROPYLENE
SECONDARY BACKING:	ACTIONBAC®
WARRANTY:	TEN (10) YEAR LIMITED WEAR

CERTIFICATION:	CRI GLP2121
ASTM E-648 FLOORING RADIANT PANEL:	CLASS I
DOC-FF-1-70 METHENAMINE PILL TEST:	PASSES
AATCC 134 ELECTROSTATIC PROPENSITY:	< 3.5 KV
Eo622 CHAMBER:	LESS THAN 450

SPECIFICATIONS ARE BASED ON AVERAGES FROM MANUFACTURING PROCESSES AND MAY VARY WITHIN NORMAL INDUSTRY TOLERANCES. MATERIAL SUPPLY AND /OR MANUFACTURING PROCESSES MAY NECESSITATE SPECIFICATION CHANGES WITHOUT NOTICE. SUCH VARIATIONS DO NOT AFFECT PRODUCT PERFORMANCE.

THIS CARPET IS MANUFACTURED AND RECOMMENDED FOR FLOOR COVERING USE ONLY. AS IN ALL QUALITY CARPET, COLORS ARE SUBJECT TO DYE LOT VARIATIONS. FOR OPTIMUM SIDE MATCH AND FINISHED SEAM APPEARANCE, THIS PRODUCT SHOULD BE INSTALLED WHENEVER POSSIBLE, WITH SEAMS RUNNING PERPENDICULAR TO MAJOR EXTERNAL (OUTSIDE) LIGHT SOURCES.

THE EQUIPMENT USED TO MANUFACTURE PATTERNED CARPET MAY CREATE VISIBLE LINES IN BOTH LENGTH AND WIDTH DIRECTIONS. THIS CHARACTERISTIC WILL NOT ALWAYS BE DETECTABLE IN SMALL SAMPLES AND IS NOT CONSIDERED A MANUFACTURING DEFECT.

AS WITH ALL PATTERNED CARPETS, PERFECT PATTERN MATCH MAY NOT BE OBTAINABLE AT SEAMS. TOLERANCES IN PATTERN REGISTRATION – BOW AND SKEW – ARE TO BE EXPECTED. ALL SEAMS AND CUT EDGES AT DOORS AND CLOSETS MUST BE SEAM SEALED.

CHAIR PADS ARE RECOMMENDED UNDER CHAIRS WITH ROLLERS TO PRESERVE APPEARANCE RETENTION, AVOID PREMATURE OR ACCELERATED WEAR, AND ACT AS A DETERRENT TOWARD DELAMINATION. SPECIAL BACKING SYSTEMS ARE AVAILABLE THAT DO NOT REQUIRE CHAIR PADS. WALK OFF MATS ARE RECOMMENDED AT BUILDING ENTRY WAYS TO REDUCE SOILING.

PLEASE CALL SIGNATURE'S TECHNICAL SERVICES DEPARTMENT AT 800-809-7086 FOR ANY QUESTIONS OR ASSISTANCE.

SIGNATURE



PATTERN: COVE BASE C29286 (3299)

REPEAT: N/A 4" WIDE COVE BASE

CONSTRUCTION: CUT PILE SOLID



A



3299

COLORS ARE APPROXIMATION ONLY. PLEASE REFER TO THE SIGNATURE POM SET FOR ACTUAL COLORS.

SIGNATURE



COVE BASE

C29286 (3299)

CUT PILE SOLID

DYE METHOD:	SOLUTION
PILE FIBER:	100% SOLUTION DYED NYLON
TUFTED PILE WEIGHT:	30 OZ. PER SQ. YD.
STITCH RATE:	13 STITCHES PER INCH
PILE HEIGHT:	.218 AVERAGE
DENSITY FACTOR:	4954
WEIGHT DENSITY FACTOR:	148,620
TOPICAL STAIN TREATMENT:	SCOTCHGARD® AVAILABLE
WIDTH:	4" COVE BASE SOLID
PATTERN REPEAT:	N/A
PRIMARY BACKING:	WOVEN POLYPROPYLENE
SECONDARY BACKING:	ACTIONBAC®
WARRANTY:	TEN (10) YEAR LIMITED
WEAR	

CERTIFICATION:	CRI GLP2121
ASTM E-648 FLOORING RADIANT PANEL:	CLASS I
DOC-FF1-70 METHENAMINE PILL TEST:	PASSES
AATCC 134 ELECTROSTATIC PROPENSITY:	< 3.5 KV
Eo622 CHAMBER:	LESS THAN 450

SPECIFICATIONS ARE BASED ON AVERAGES FROM MANUFACTURING PROCESSES AND MAY VARY WITHIN NORMAL INDUSTRY TOLERANCES. MATERIAL SUPPLY AND /OR MANUFACTURING PROCESSES MAY NECESSITATE SPECIFICATION CHANGES WITHOUT NOTICE. SUCH VARIATIONS DO NOT AFFECT PRODUCT PERFORMANCE.

PLEASE CALL SIGNATURE'S TECHNICAL SERVICES DEPARTMENT AT 800-809-7086 FOR ANY QUESTIONS OR ASSISTANCE.